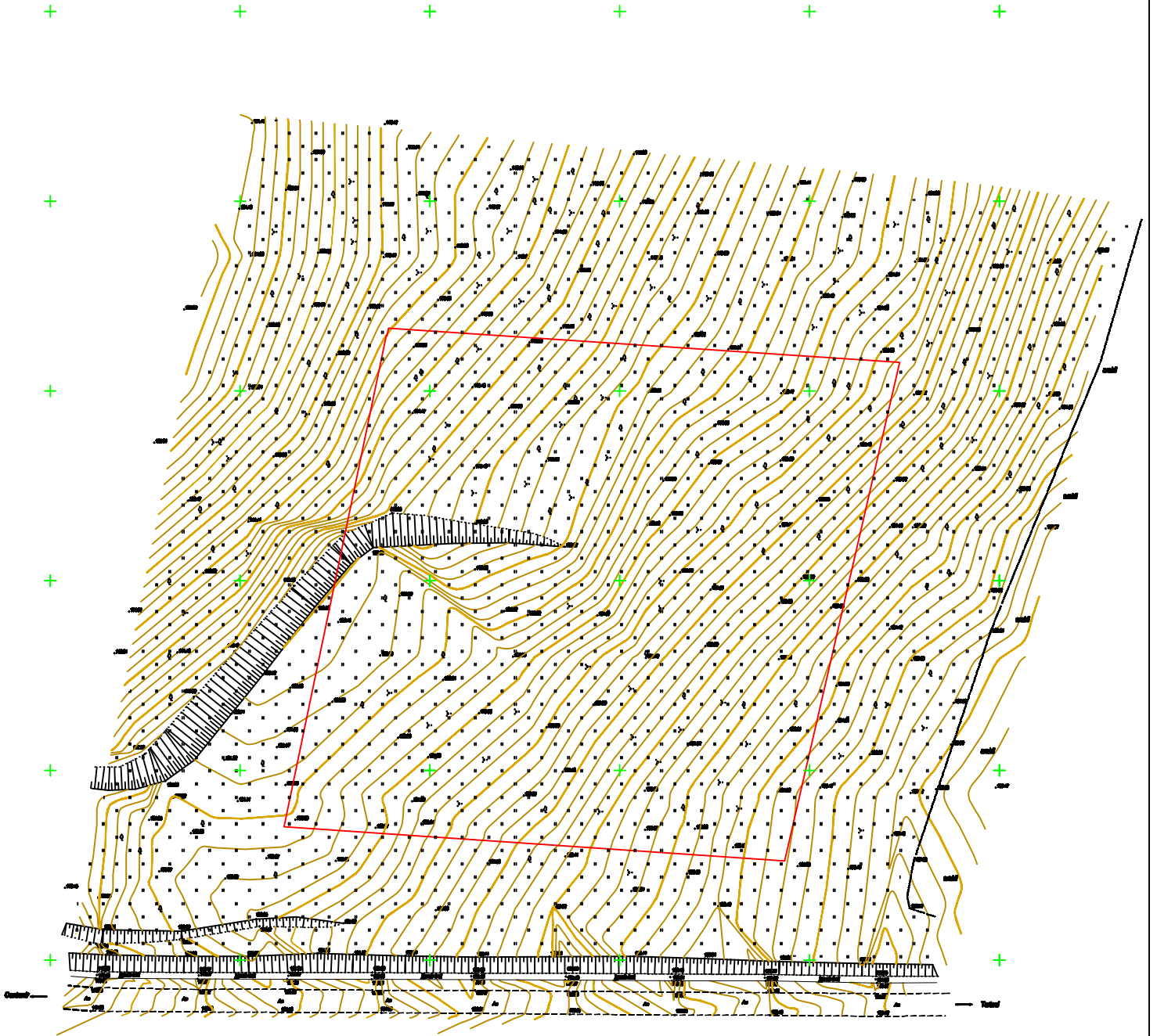
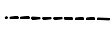
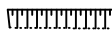
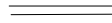
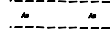
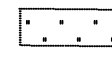




# Statia de transfer s.Cania,r-nul Cantemir



## Semne convenționale

-  **conturul drumului existent**
  -  **Perită**
  -  **canal de beton pentru scurgere a apei**
  -  **drum asfaltat**
  -  **pășune**
  -  **copaci**
- 126.23 **Altitudine față de nivelul Mării Baltice**
  -  **Hotarul aproximativ al lotului**
  - **tufari**